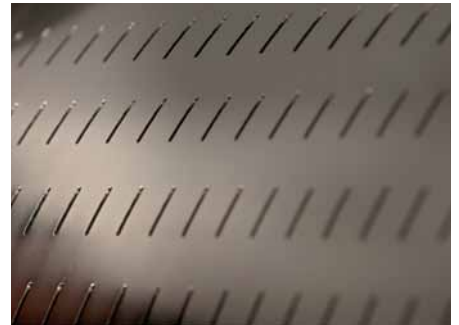


Drum design PSP

- ▶ open drum
- ▶ half of the drum is covered by an impermeable membrane
- ▶ half of the drum is perforated
- ▶ the presses PSP 5, 8, 10, 12 and 16 have electropolished drum



Drum design PST

- ▶ closed drum
- ▶ half of the drum is covered by an impermeable membrane
- ▶ half of the drum is equipped with perforated draining channels
- ▶ all draining channels are electropolished



Drum design PST with separate draining channels



Drum design PST with connected draining channels

